



With NAPLAN approaching, SAASSO has been contacted by parents concerned that children with disabilities receive no help with the tests - and are instead encouraged to withdraw from sitting NAPLAN.

In fact, a range of 'adjustments' are allowed to ensure children with disabilities have an equal opportunity as other students to take the tests.

This right is guaranteed under the Disability Standards for Education (2005).

Adjustments include:

- Extra time to take the tests - up to an extra 15 minutes, per half hour of published time.
- Rest Breaks - up to 15 minutes per half hour of published time.
- Scribes may be used to help students complete the writing test.
- A support person may be used for the reading, language and numeracy tests - to shade in bubbles or write short responses, dictated by the student.
- A support person may read aloud elements of the test to a student.
- Where a student regularly uses a computer in the classroom they may also be allowed to use one to sit the tests.
- Students may take the test in an electronic format.

*This list is not exhaustive and students are allowed access to more than one adjustment in any one test - and different adjustments for different tests.*

Principal's Responsibilities

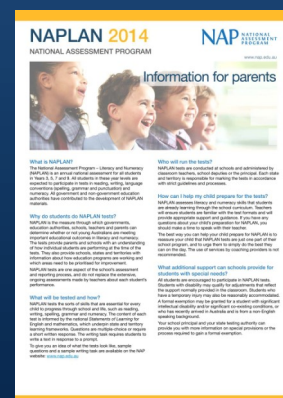
Each state has a Test Administration Authority (TAA), which authorizes adjustments for students.

Adjustments are not automatic and your principal must apply to the TAA.

Principals must ensure parents are aware of adjustments and agree to them.

The principal must make arrangements at the school level to provide students with the adjustments they require.

The principal must ensure the test administrator supervising the test has a thorough understanding of adjustments.



For more information, contact your principal or the SA Testing Authority on (08) 8226 2470

[Click here to visit the NAPLAN section of SAASSO's website.](#)