



This week's stories from the media

- Ban the bullies
- Hundreds of kids locked up
- Children run the gauntlet on roads
- Teachers cop the blame as faith in schools shakes
- SA Labor accused of flip-flopping
- Children lose two years of education
- Enrolment caps on 13 schools

Hundreds Of Kids Locked Up

Almost 100 primary school-age children have been locked up in Adelaide's youth detention centre over the past four years, as authorities grapple with a culture of revolving-door repeat offending.

Latest figures show that 96 children aged 10 to 12 were detained for criminal activity between 2014-15 and July 1 this year. They were among a total 1595 youths, aged 10 to 20, incarcerated over that time.

Child welfare advocates say more funding is desperately needed for early intervention work with at-risk youths and better education and rehabilitation options to stop the revolving door.

They add that many are victims of, or witnesses to, crime themselves - such as child abuse or substance misuse.

Almost a quarter of the 329 youths detained last financial year were in the care of the state.

[Read the story](#)

Ban The Bullies

The Advertiser reports that the latest survey by SAASSO has found that parents and school staff want to get tough when it comes to school bullying.

Asked if serial bullies should be banned from using computers and mobile phones at school, 82% of respondents voted yes, with parents supporting the ban more than non-parents.

The survey, conducted by the South Australian Association of State School Organisations Inc (SAASSO), reported 81% of principals surveyed supported serious bullying offences being reported to police, as did 85% of teachers.

SAASSO director, David Knuckey, said the survey, which had 1034 responses - including 91 principals - 'revealed deep concerns about the 'devastating impact of bullying'.

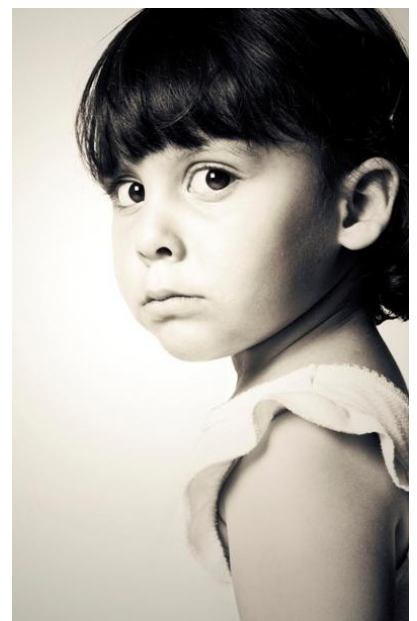
'The responses also show dissatisfaction with existing policies and strong support for a fundamental shift in how we combat the scourge of bullying,' he said.

Education Minister John Gardner said the Marshall Government was taking serious action to address bullying.

He said the Education Department was developing a comprehensive anti-bullying strategy to address all forms of bullying.

'This approach will include a strong focus on addressing cyber-bullying'.

[More](#)



“...parents desperate to get a better education for their children in high socio-economic areas....”

Children Run The Gauntlet On Roads

School children returning to class today will run a gauntlet of drivers rushing to work, with the most risky locations for students mapped for the first time.

Adelaide High School is by far the most risky location for students, bounded by West Terrace and Glover Avenue (which runs between Currie St and Henley Beach Road).

One hundred and seventy two people were hit by cars near the school during 2014, 2015 and the latest figures available; 2016.

The next most dangerous schools for pedestrians have had three or more pedestrian injuries each year over this three year period; Woodville High School, 46, Roma Mitchell Secondary College, 42, Plympton International College, 34, and Playford International College 30.

RAA road safety spokesman Charles Mountain welcomed the new maps, and urged motorists to take care when children returned to school today.

[More](#)

Teachers Cop The Blame As Faith In School Shakes

Parent perceptions that Australia's education standards are declining are reflected in objective data from international studies, a leading education analyst says.

Your Say SA respondents are damning of the SA education system, with almost four in five respondents saying the system is 'ineffective; in equipping students for a further education or career.

And the skill set of teachers is under scrutiny, with only 42% saying they have the required skills to do the job.

“There is a general sense of concern that the Australian education system isn't providing the quality we need. International assessment has shown our education system has declined significantly over the past 15 years.”

Another issue gaining backing is the move of Year 7 in to high school (63% support that move this year, up from 59% last year).

[More](#)

SA Labor Accused Of Flip-Flopping

Labor has been accused of “flip-flopping” over a move to require students at South Australian public schools to opt in to religious activities, including Christmas events, rather than opt out.

But Mr Pangallo criticised Labor for seemingly “flip-flopping on what its position is”.

“The briefing and amendment I was shown a month ago by Dr Close is at odds with what the - Opposition Leader says,” Mr Pangallo said. “My concern is that as it stood, it could have been interpreted any which way.

Education Minister John Gardner said the Labor amendment was unnecessary and unworkable.

[Full Story](#)

Children Lose Two Years Of Education

A child born in Australia today will lose the equivalent of more than two years of schooling because of a lack of quality in their education, a new report has found.

The World Bank's Human Capital Index has found that a child born in Australia today will be 80% as productive as they could have been, had they enjoyed complete education and full health.

The report found that an Australian child who starts school at the age of four can expect to complete 13.8 years of school by age 18. However, when those years of schooling are adjusted for quality of learning this is only equivalent to 11.6 years, a learning gap of 2.2 years.

[More](#)

Enrolment Caps On 13 Schools

More than a dozen of Adelaide's most in-demand schools have been declared off limits to many new students to stop an influx of enrolments.

13 schools have been given student control plans to restrict numbers, while another seven have been given suburb zones to cut numbers.

Five more have had their zones reduced in size.

The figures show in the last two years there has been a rush on schools in Adelaide's leafy and population-stable eastern suburbs, by parents desperate to get a better education for their children in high socio-economic areas.

[Read more](#)